

Customer :
Project Name :
Project No. :
Revision No. :

SPECIFICATION for INDUCTION MOTOR



0		For Bidding			
No.	DATE	DESCRIPTION	PREPARED BY	CHECKED BY	APPROVED BY

AC INDUCTION MOTOR DATA SHEET

Model No.or RFQ No.		Item No.		Rev. No. []			
Project Name		Project No.		Quantity sets			
GENERAL SPECIFICATION			PERFORMANCE DATA				
Frame Size	71M		Rated Output	0.4 kW 0.5 HP			
Type	HLP-0.4/2		Number of Poles	2			
Enclosure(Protection)	Totally Enclosed / IP55		Rotor Type	Squirrel Cage			
Method of Cooling	IC411(FC)		Starting Method*	<input checked="" type="checkbox"/> D.O.L <input type="checkbox"/> Y-Δ			
Rated Frequency	60 Hz		Rated Voltage	220 V			
Number of Phases	3		Current	Full Load	1.8 A		
Insulation Class	<input checked="" type="checkbox"/> F <input type="checkbox"/> B <input type="checkbox"/> H		Locked-rotor**	800 %			
Temp. Rise at full load (by resistance method)	at 1.0 S.F 80 deg. C		Efficiency				
Motor Location	<input checked="" type="checkbox"/> Indoor <input type="checkbox"/> Outdoor						
Altitude	Less than 1000 meter		100% Load	73.4 %			
Relative Humidity	Less than 80 %		Power Factor(p.u)				
Ambient Temp.	40 deg. C (Max.)						
Duty Type	Continuous (S1)		100% Load	0.800			
Service Factor	1.15		Speed at Full Load	3435 r.p.m			
Mounting	B3		Torque				
Bearing	Type	Anti-Friction	Full Load	0.1 kg·m 1.1			
	DE/N-DE	6203ZZC3 / 6202ZZC3	Locked-rotor**	350 % 0.4 kg·m			
	Lubricant	Grease	Breakdown**	210 % 0.2 kg·m			
External Thrust	Not applicable		Moment of Inertia (J)				
Coupling Method	<input checked="" type="checkbox"/> Direct <input type="checkbox"/> V-Belt		Load(Max.)	0.136 kg·m ²			
Shaft Extension	<input checked="" type="checkbox"/> Single <input type="checkbox"/> Double		Motor	0.001 kg·m ²			
Terminal	Main	<input checked="" type="checkbox"/> Aluminum <input type="checkbox"/> Cast Iron	Sound Pressure Level (No-load & mean value at 1m from motor)	69 dB(A)			
Box	Aux.	<input type="checkbox"/> Yes <input type="checkbox"/> No	Vibration	1.6 mm/sec (peak)			
	Location	Refer to Outline Drawing	Permissible number of consecutive starts	Cold 20 times Hot 15 times			
Application			Paint	Munsell No.	PHANTONE 279C		
Area classification	Non-Hazardous						
Type of Ex-Protection	Not applicable						
Applicable Standard	KS, IEC, NEMA MG1 Part30(Vpeak)						
ACCESSORIES			SUBMITTAL DRAWING				
			Outline Dimension Drawing \ Motor Weight(Approx.)				
			B3 LM-A1071B3P3V01 15 kg				
			REMARK				
			*. Premium efficiency(IE3) acc. to KS C 4202				
			*. SSEN Series				
			*. For use on PWM VFD 10:1VT,3:1CT@1.0S.F&F Temp.rise				
SPARE PARTS			<div style="border: 2px solid red; padding: 10px; text-align: center; font-size: 2em; color: red;">FOR BIDDING</div>				
			Date	DSND	CHKD	CHKD	APPD
			2021-04-21				

Type : HLP-0.4/2

Full Load Torque : 0.1 kg.m

 Load moment of Inertia (J) : - kg.m²

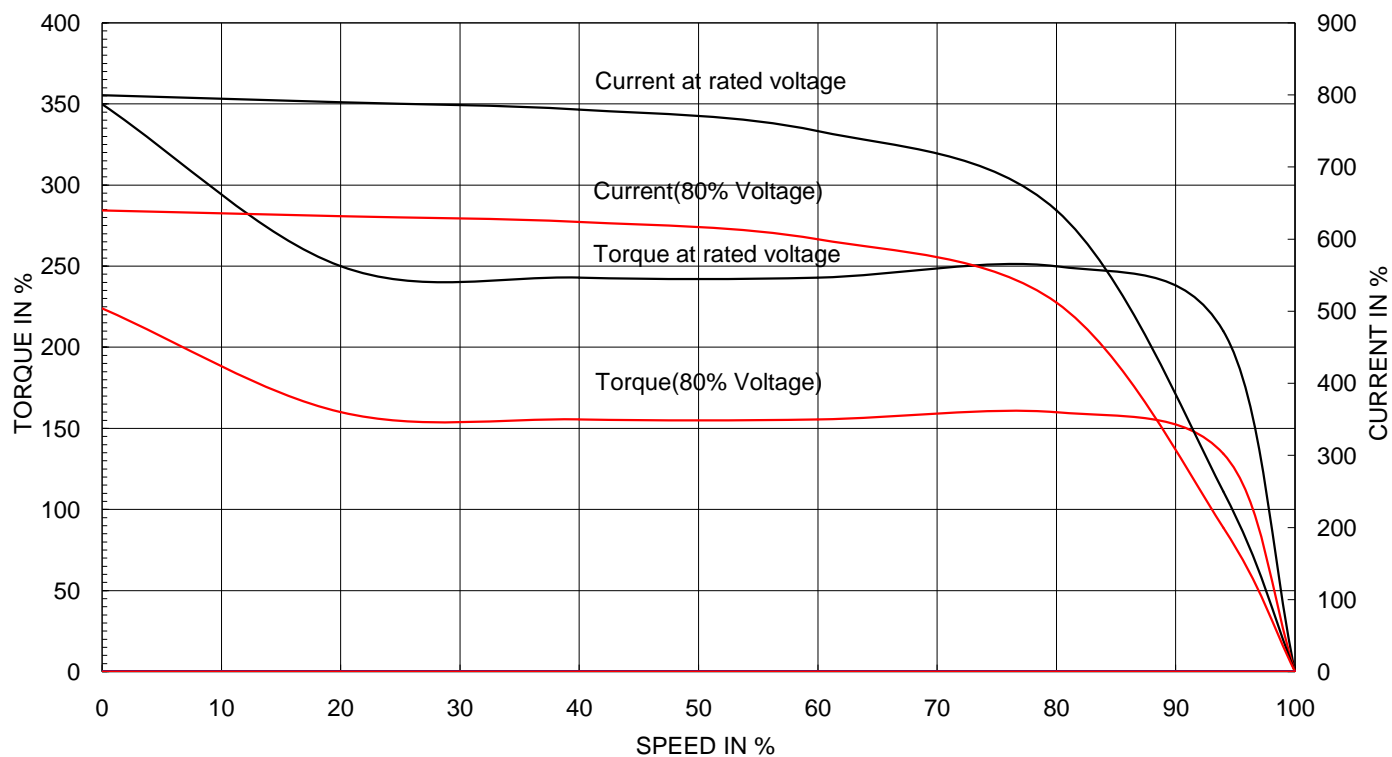
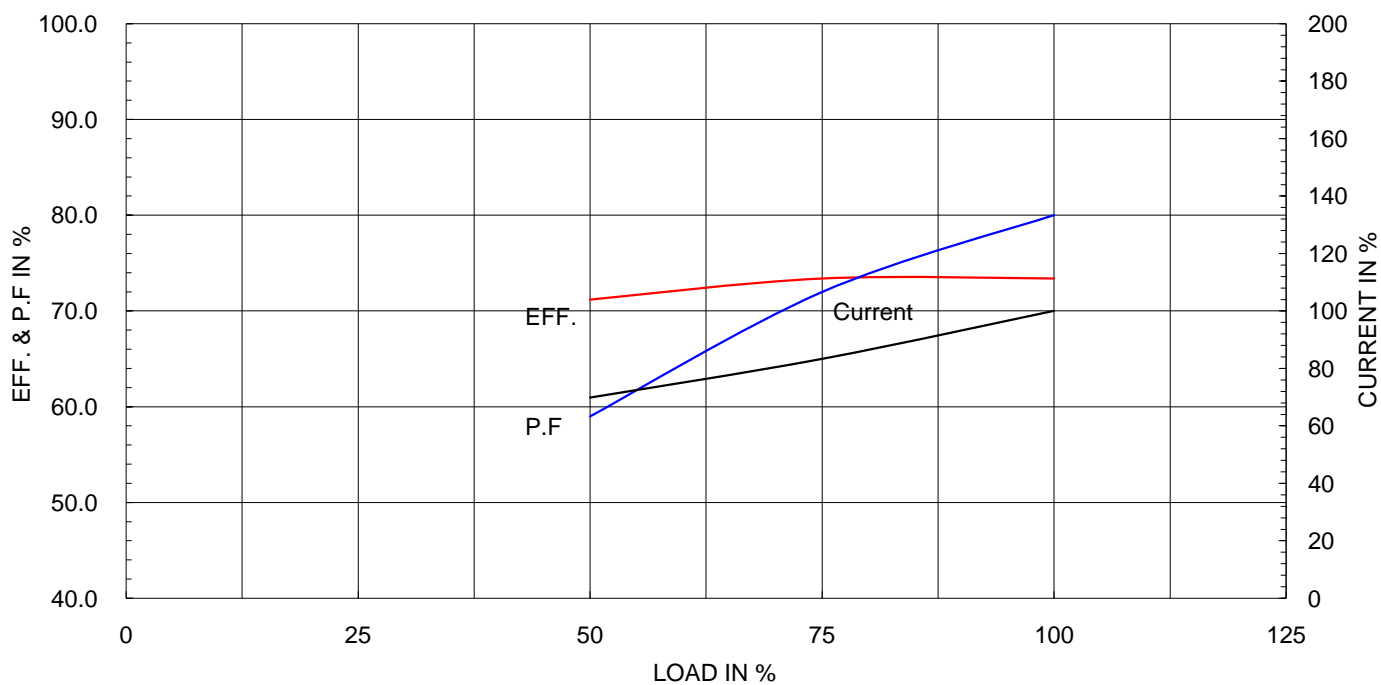
 Motor moment of Inertia (J) : 0.001 kg.m²

0.4 kW 2 P 60 Hz

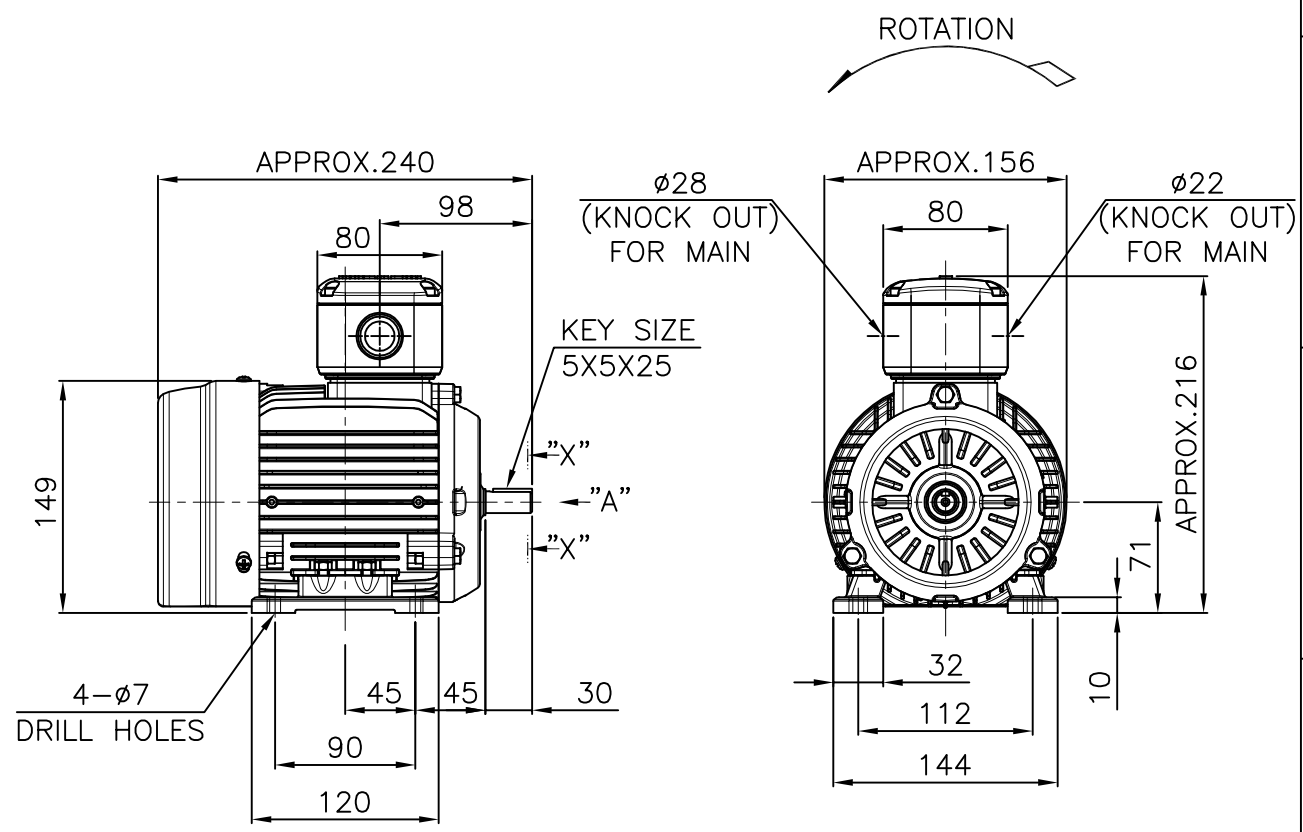
Speed at Full Load : 3435 RPM

Rated Voltage 220

Full Load Current 1.8A

SPEED VS TORQUE & CURRENT CURVE

OUTPUT VS EFF., P.F & CURRENT CURVE


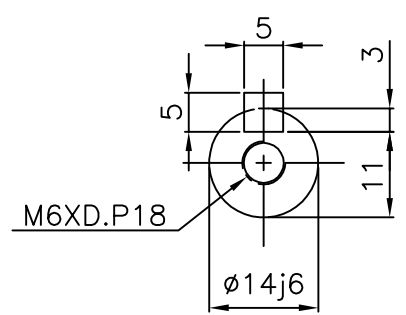
1			2		3		4		
▽	50S	REV	DATE	CONTENTS		REVD BY	CHKD BY	CHKD BY	APPD BY
▽▽	12.5S								
▽▽▽	3.2S								
▽▽▽▽	0.4S								



NOTE

1.TOLERANCE :

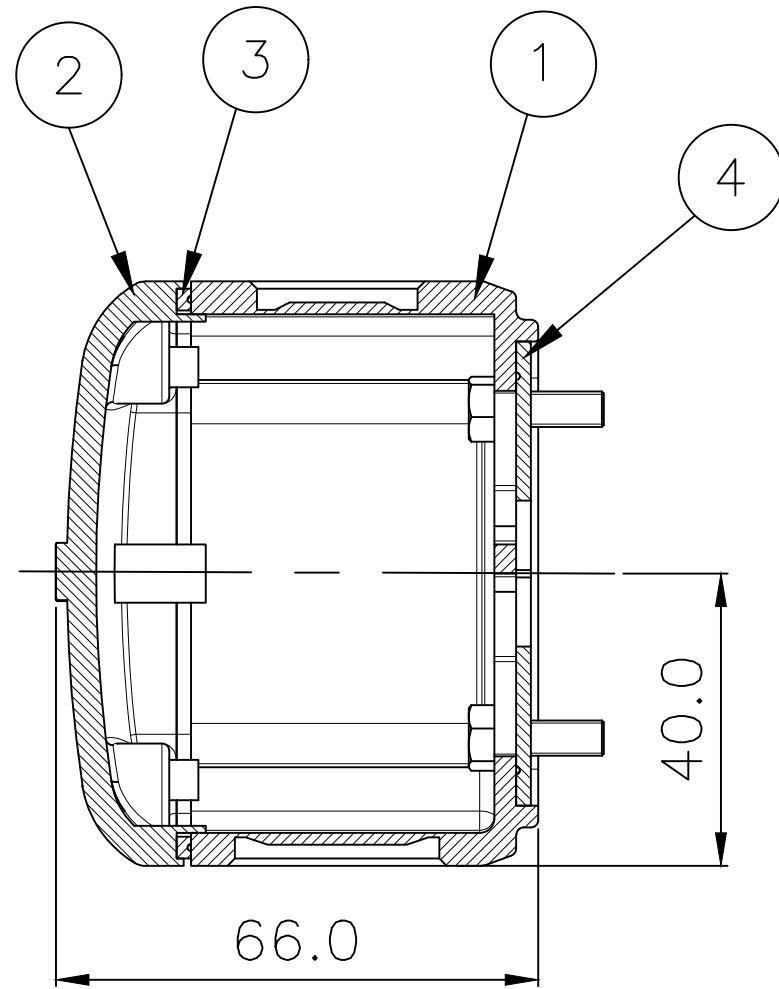
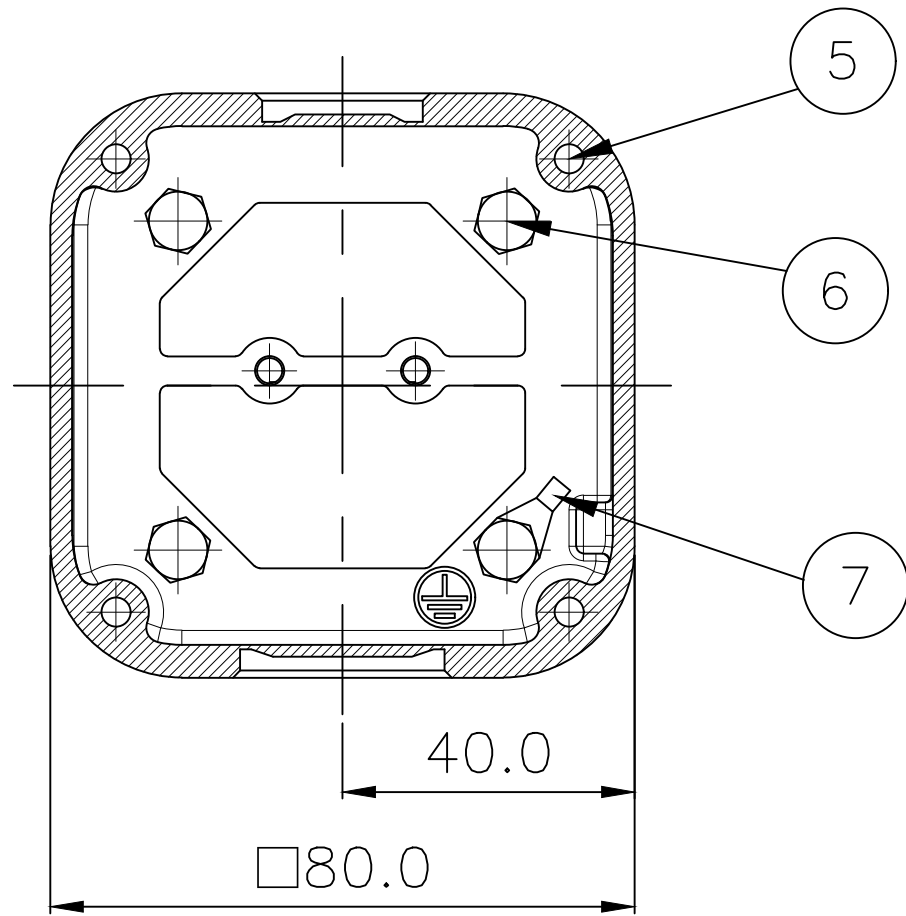
CENTER HEIGHT	71	$\begin{smallmatrix} 0 \\ -0.5 \end{smallmatrix}$
BASE HOLES	ø7	$\begin{smallmatrix} +0.36 \\ 0 \end{smallmatrix}$
SHAFT DIAMETER	ø14	$\begin{smallmatrix} +0.008 \\ -0.003 \end{smallmatrix}$
KEYWAY WIDTH	5	$\begin{smallmatrix} 0 \\ -0.030 \end{smallmatrix}$
KEYWAY DEPTH	3	$\begin{smallmatrix} +0.1 \\ 0 \end{smallmatrix}$
KEY WIDTH	5	$\begin{smallmatrix} 0 \\ -0.030 \end{smallmatrix}$
KEY HEIGHT	5	$\begin{smallmatrix} 0 \\ -0.030 \end{smallmatrix}$



SECTION "X-X"

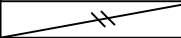

SCALE 5/4

APPD BY	S.K.HAN	UNIT	mm	SUBJECT	KS, IEC Fr.71M	DWG SIZE	A4 (15)
CHKD BY	S.Y.KIM	SCALE	1/5	TITLE OUTLINE			
CHKD BY	I.K.KIM	PROJEC'N	3각법 (3rd Angle)				
DSND BY	S.H.LEE	DATE	2020.06.16				
				REF. NO		Sheet No.	of
				DWG NO	LM-A1071B3PTV01	Revision No.	0



▽	50S
▽▽	12.5S
▽▽▽	3.2S
▽▽▽▽	0.4S

REV	DATE	CONTENTS	REVD BY	CHKD BY	CHKD BY	APPD BY	일반기공차	일반재관공차
							1-4 ±0.1 6-30 ±0.5	
							4-18 ±0.2 30-120 ±0.8	
							18-63 ±0.3 120-315 ±1.2	
							63-250 ±0.5 315-1000 ±2.0	
							250- ±0.8 1000- ±3.0	

1	GROUND TERMINAL LUG	CU	--					7
4	BOX+FRAME HEX BOLT	S45C	M5 X L15					6
4	COVER+BOX HEX BOLT	S45C	M5 X L15					5
1	BOX GASKET	NBR	--					4
1	COVER GASKET	NBR	--					3
1	CONDUIT BOX COVER	AL	--					2
1	CONDUIT BOX	AL	--					1
Q'TY	DESCRIPTION	MATERIAL	DIMENSION	WEIGHT	PART NO.	REMARK	NO.	
APPD BY	S.K.HAN	UNIT	mm	SUBJECT	SSEN SERIES 71-80FR. BOX		DWG SIZE	
CHKD BY	I.K.KIM	SCALE	1/1				A3 (1:1)	
CHKD BY		PROJEC'N	3rd Angle	TITLE TERMINAL BOX ASS'Y				
DSND BY	이승호	DATE	2020-06-19					
				REF. NO	Sheet No. of			
				DWG NO	3M-234754		Revision No. 0	
6		7		8		9		